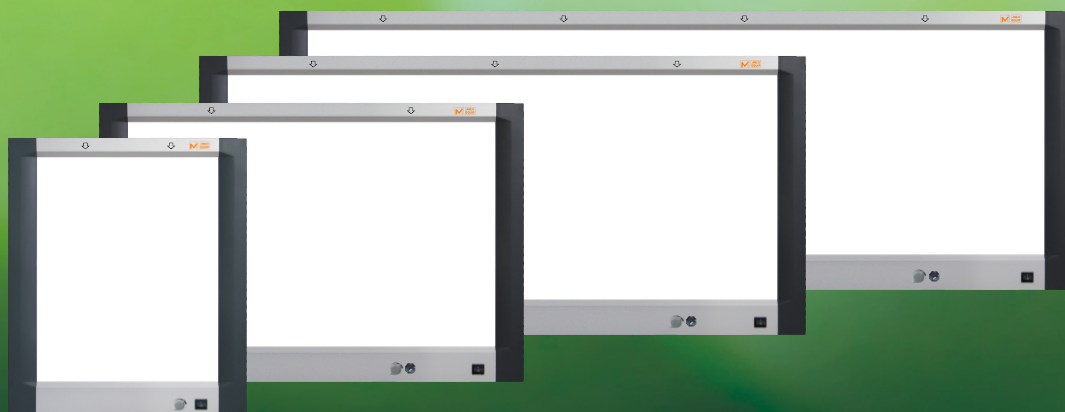


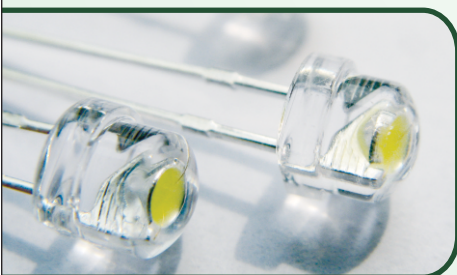
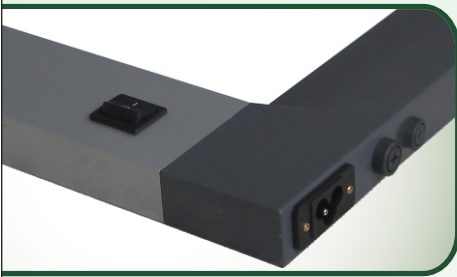
X-RAY

FILM ILLUMINATOR

-HLF SERIES



ADVANTAGES OF MEX EQUIP X-RAY FILM ILLUMINATOR



- ☞ The highest illuminance for the HIGH LUMINANCE LED illuminator is approx. 18000 lux / highest Luminance of approx 6000 cd/m². This new type of product adopt with the international advance technology with high luminance LED as the backlight.
- ☞ Nobler thin design - The three-dimensional design frame use silver and dark gray, and the new-style material such as electrophoresis aluminum-alloy, plastic alloy etc. It shows the noble character. The shape is thin, the thickness is only 2.5 cm at edges / 3.8 cm on top & bottom.
- ☞ Automatic switch - The viewing area will be bright after inserting the film and it will be off after extracting the film.
- ☞ Smooth insertion/removal of film. It has roller-needle technology for perfect grip of films.
- ☞ Illuminance adjusting for large-scale (60% Approx.). It meets the viewing and diagnostic requirement for different density film of simulation, digital and mammography adequately.
- ☞ Due to flicker-free energy saving light you will not feel tired even after a long time gazing.
- ☞ The life of LED is 100,000 hours. It is over 5 times than the CCFL lamp.
- ☞ 6500K white color temperature is more suitable for viewing and diagnosis film
- ☞ Adopt with the imported Acrylic euphotic panel, high finish, uniformity and soft light. It has a long life of usage. It has very low heat dissipation.
- ☞ Adopt with LED backlight technology. There is no dark spot in the viewing area. The uniformity of the viewing screen is more than 90%.
- ☞ Adopt with the global voltage 90V-240V. Built-in electrical source. Conforms to IEC 6060-1 and MDD 93/42/EEC.
- ☞ External fuses for protection from power surge.
- ☞ Easily Wall mountable / Desk mount (Optional).

Specifications

| Type | ME-HLF-1F | ME-HLF-2F | ME-HLF-3F | ME-HLF-4F |
|--------------------------|---|----------------|-----------------|-----------------|
| Dimension W x H x T (mm) | 470 X 545 X 38 | 850 X 545 X 38 | 1230 X 545 X 38 | 1610 X 545 X 38 |
| Visual size W x H (mm) | 360 X 440 | 740 X 440 | 1120 X 440 | 1500 X 440 |
| Power Consumption | 25W | 50W | 75W | 100W |
| Type of the Light Source | HIGH LUMINANCE LED, 100000 Hours | | | |
| Luminance Adjustment | approx. 60%, Individual Panel Rotary Continuous electronic dimmer at bottom | | | |
| On/Off Control | Individual Panel On/Off Control at bottom + Central Control for all Panels | | | |
| Film Activation Switch | Individual Panel Film Activation Switch | | | |
| Luminance Uniformity | ≥ 90% | | | |
| Power Supply Input | AC 110~240V 50-60Hz | | | |

* Design and specifications are subject to change without prior notice. Rev 1_2/1-0

MEXINDIA

(An ISO 9001:2008 Certified Company)

F-148, Lal Building, Main Market, Laxmi Nagar, Delhi-110 092 INDIA

Phone : +91-11-4942 9429, 4978 9302, 4978 9301 Fax : +91-11-2243 8272

Mobile: +91-98105 78789, +91-98182 33396 E-mail : mex.info@mex-india.com

Dealer Stamp/Rep. By

