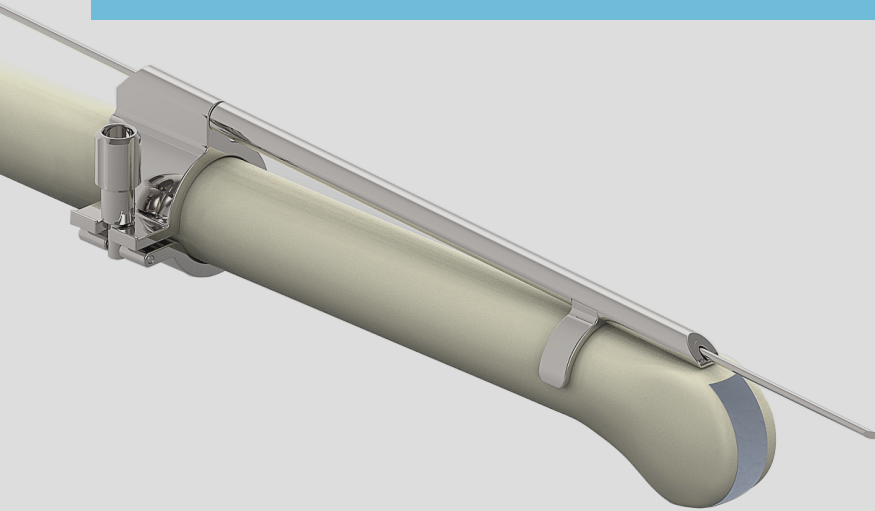


InnoFine

# Biopsy Needle Guides for Supersonic



- Integral design without any accessories
  - High grade medical stainless steel
  - Artificial polishing
- Supporting accurate and angle adjustable biopsy
- Matching a wide range of needle gauges
  - Simple pressing, quick release

## List of Biopsy Needle Guides for Supersonic

REF#	Transducer	Tranducer Type	Gauge Size/Guide Channel Length
JSM-176	SC6-1	Convex	11-23G,3Fr-6Fr/3.5cm
JSM-158	XC6-1/SC6-1(II)	Convex	11-23G,3Fr-9Fr/3.5cm
JSM-262	C9-2X	Convex	14-22G,3Fr-6Fr/3.5cm
JSM-066	SL15-4	Linear	14-22G,3Fr-6Fr/3.5cm
JSM-038	SL10-2(I)	Linear	14-22G,3Fr-6Fr/3.5cm
JSM-038	SL10-2(II)	Linear	14-22G,3Fr-6Fr/3.5cm
JSM-268	SL15-4(II), SL18-5	Linear	14-22G,3Fr-6Fr/3.5cm
JSM-023	SMC12-3	Microconvex	14-22G,3Fr-9Fr/3.5cm
JSM-139	XP5-1	Phased Array	14-22G,3Fr-9Fr/3.5cm
JEM-025	SE12-3	Transvaginal	16-18G/13cm

(Please contact InnoFine for more models.)