

# DIAOND

All-In-One Digital Radiography System



# DIAMOND DR System

## High Performance and Reliability

### Fully Automatic Operation

The DIAMOND DR System is a fully automatic digital radiography system providing state-of-the-art image quality, image processing and user interface. With a wide selection of anatomical studies on the imaging software, DIAMOND automatically sets up the x-ray generator's preprogrammed exposure technique settings, motorized radiographic stand positioning, x-ray collimation and post-image processing for the selected study. Specifically designed to increase workflow, this fully digital system offers convenient auto-positioning and advanced image processing to achieve big performance with little effort.

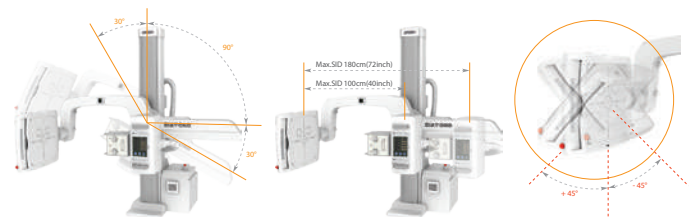
### Features

#### Automatic Collimation

- Automatic x-ray field size control of the motorized collimator corresponds to different SIDs. Includes user adjustable lamp timer with on/off switch.

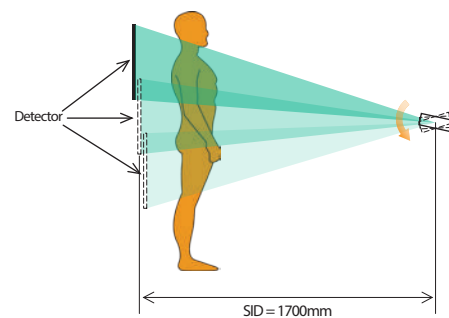
#### Automatic Positioning

- DIAMOND is a fully-automatic diagnostic system with motorized movement and pre-programmed data for automatic positioning that can be easily reprogrammed by the operator.
- Seven safety sensors have been integrated into the DIAMOND system to protect patients from accidental collision.



#### Automatic Stitching

- DIAMOND provides outstanding automatic stitching function via source tilting for creating one long composite image.

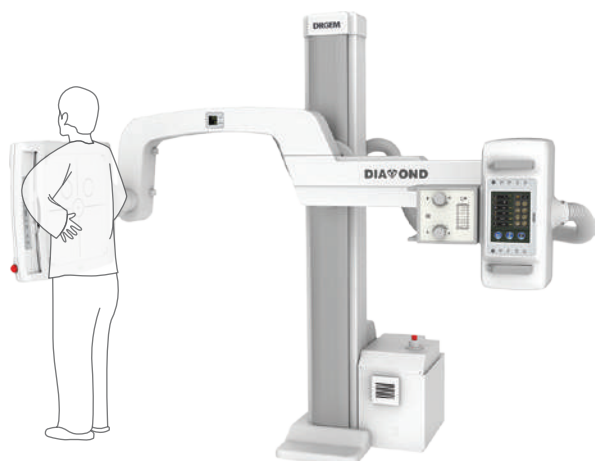


Source tilting method

## DIAMOND Positioning Guide

DIAMOND's U-arm rotation ranges from +120° to +30° with SID movements from 100cm to 180cm. The mobile patient table can also be used to take patient images in a variety of positions for a total of over fifteen different positions. With effortless, fully-motorized positioning using the user-friendly touch console or remote control, DIAMOND is a truly versatile, all-purpose digital system.

### Chest PA



### Skull Towne's



### Abdomen Supine



### Hand AP



### C-T Spine Swimmers



### Abdomen Decubitus



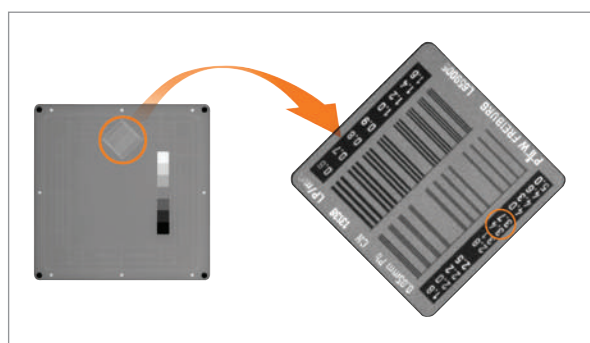
# Specification

## High Frequency X-ray Generator

System Model	DIAMOND-5A	DIAMOND-6A	DIAMOND-8A
Model	GXR-52	GXR-68	GXR-82
Output Rating	52kW	68kW	82kW

# Outstanding Image Quality

Digital radiography via flat panel detector improves your workflow, exam speed and comfort with efficiency. Digital flat panel detector with CsI screen provides excellent spatial resolution, MTF, DQE and stability based on fine pixel pitch. A 3-field ion-chamber is provided for AEC function.



(Spatial Resolution Chart : PTW Normi-13)



### Digital Detector Assembly

- Front Cover
- Removable Grid
- AEC Ion Chamber
- Digital Flat Panel Detector
- Detector Case (Aluminum Casting)
- Spare Grid Holder



### Removable High Resolution Grids

- Two removable grids are provided : SID 100/180cm (40/72 inch)
- System will sense the focal distance of each grid when it is inserted
- False grid insertion will be warned by software when usable range of grid's focal distance is not suitable with SID
- Each removable grid are protected by aluminum frame with handle

## DRGEM Customer Service Center

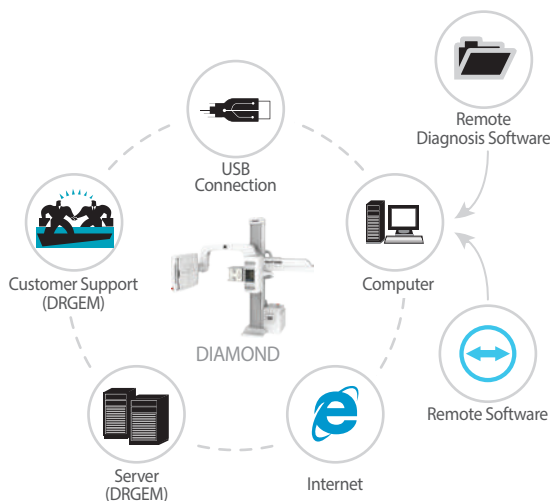
### 24/7 Support

DRGEM's Customer Service team is available 24/7, 365 days a year\* via e-mail or Skype to support clients whenever they need.

### Remote Diagnosis

Remote diagnosis can help minimize downtime by quickly finding the cause of errors and by detecting potential issues before problems occur.

\*May vary by country.



©DRGEM Corporation - All rights reserved. Reproduction in whole or in part is prohibited without the written consent of the copyright-holder.

Specifications and features are subject to change without notice. All changes will be in compliance with regulations governing manufacture of medical equipment.