

Runyes[®]
FOCUS ON DENTAL

New Upgraded **Runyes 3DS 3.0**

INTRAORAL SCANNER FOR RELIABLE
AND ACCURATE DIGITAL DENTAL IMPRESSION



Metal Scan



Calibration-Free



Fashion and Light
Handpiece Design



Perfect
Integration With
Design Software



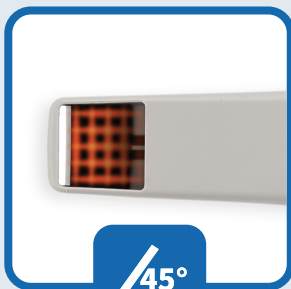
AI Fast Scan



Humanized
Scanner
Tip Design

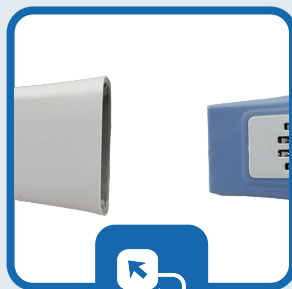


True Color



45°

Humanized Scanner
Tip Design



Easy
Detachable



Aluminum Alloy
Screw-in Connection



Cable
Connector

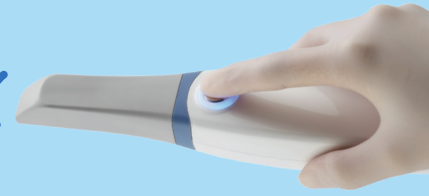
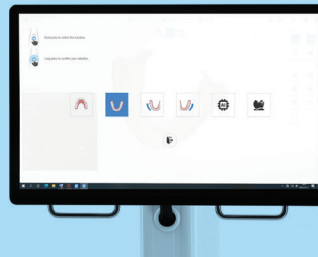
REMOTE CONTROL



Short Press The Handle Button To Switch Function

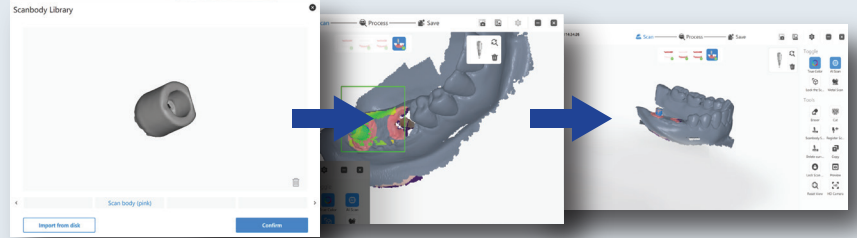


Press Handle Button For 3s To Confirm Options



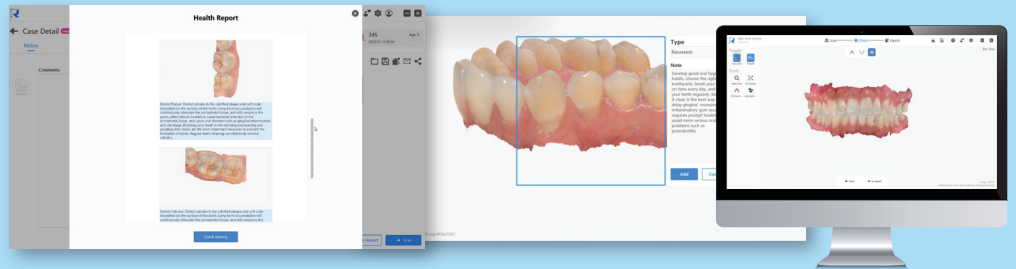
SCAN BODY SMART MATCHING

Intelligent Matching Of Scan Body.
Realtime Import & Export Of Scan Body Data



HEALTH REPORT

Automatic Identification Of Lesions
One Click Health Report Generation



FEATURES



Scanning Field Locking



Scanning View Lock Function



Undercut Examination



Margin Line Function



Model Builder Function



Software Integration

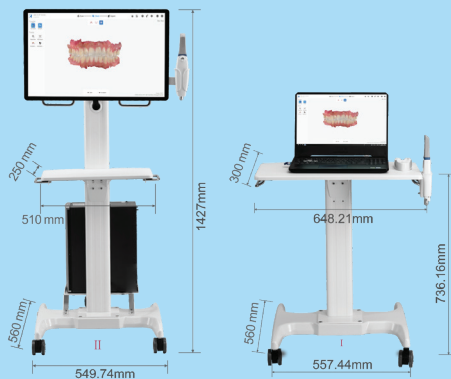


Occlusion Check



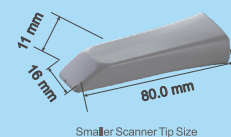
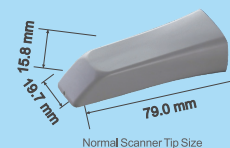
HD Camera

INTRAORAL SCANNER MOBILE CART



Specifications

Handpiece Size	240x49.5x30.5mm
Optical Continuous	Imaging Technology Video Capture
Scanning Distance	0-17mm
Accuracy	20um
Imaging Sync	3D
Quick Reset	Yes
Data Refine	Yes
Export Format	STL,PLY,OBJ
Handpiece Weight	210g
Service Life	>30000h



Sales Office: 612, Prestige Industrial Estate, Bawadi Cross Lane, Off. Marve Road, Malad (W), Mumbai-400064.

Mr.Rahul: +91 96990 89894
rahul.sali@lifechemsystems.com

Mr.Sourav: +91 88799 23116
sourav.sali@lifechemsystems.com

www.lifechemsystems.com